

65 Queen Street, Staffordshire, ST10 1BQ

£650 PCM



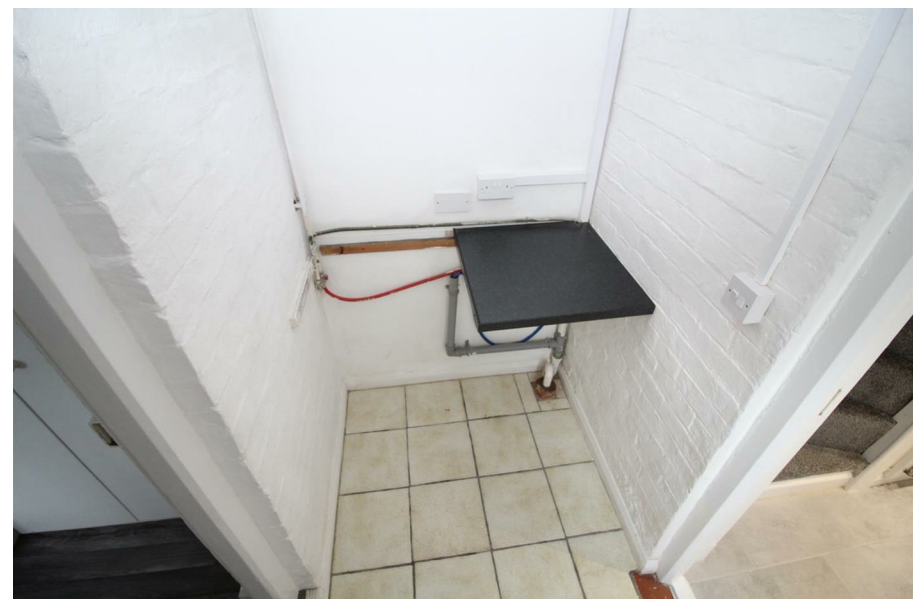


ABODE are pleased to offer for long term rental, this newly renovated mid terraced cottage close to the centre of Cheadle town centre. The property benefits from kitchen with integrated oven & hob, large walk in pantry and useful utility area with plumbing for a washing machine and space for fridge/freezer. Family bathroom with a white suite and electric shower positioned over the bath. Spacious lounge & two good size bedrooms. The rear of the property offers a low maintenance garden with secure brick storage facility, patio and raised border with mature planting. Pets by negotiation please. Council Tax - Band A. Available January 2026.

DESCRIPTION

ABODE are pleased to offer for long term rental, this newly renovated mid terraced cottage close to the centre of Cheadle town centre. The property benefits from a brand new kitchen with integrated oven & hob, large walk in pantry and useful utility area with plumbing for a washing machine and space for fridge/freezer. Family bathroom with a white suite and electric shower positioned over the bath. Spacious lounge & two good size bedrooms. The rear of the property offers a low maintenance garden with secure brick storage facility, patio and raised border with mature planting. Recent property improvements include, new floorings, freshly decorated, new boiler and full electrical rewire. Pets by negotiation please. Council Tax - Band A. Available end of September 2020.



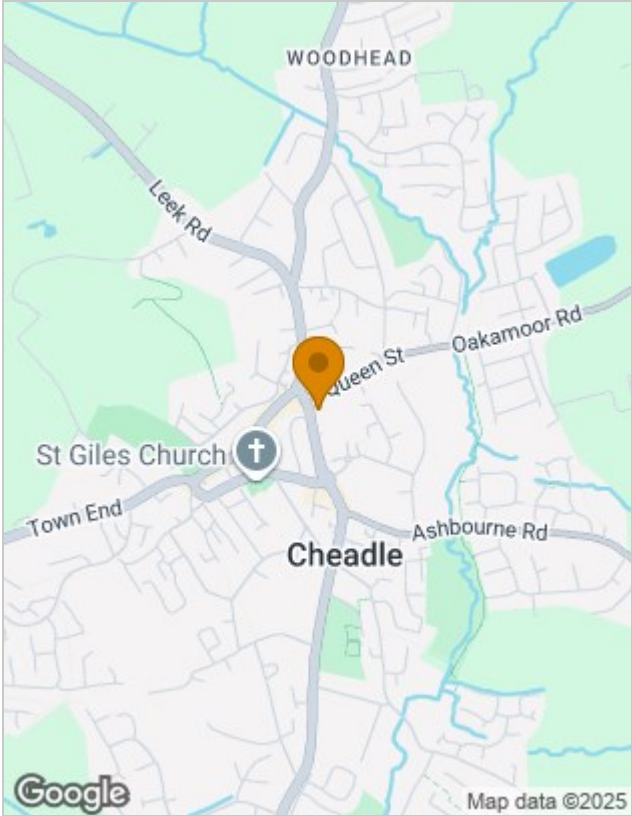




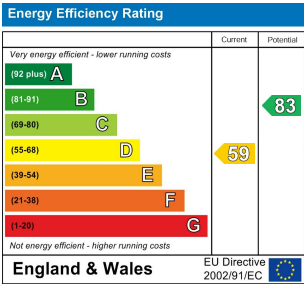
Floor Plans



Location Map



Energy Performance Graph



Please contact our Burton Lettings Office on 01283 845888 if you wish to arrange a viewing appointment for this property or require further information.

The particulars are set out as a general outline only for the guidance of intended purchasers or lessees, and do not constitute, any part of a contract. Nothing in these particulars shall be deemed to be a statement that the property is in good structural condition or otherwise nor that any of the services, appliances, equipment or facilities are in good working order. Purchasers should satisfy themselves of this prior to purchasing.